

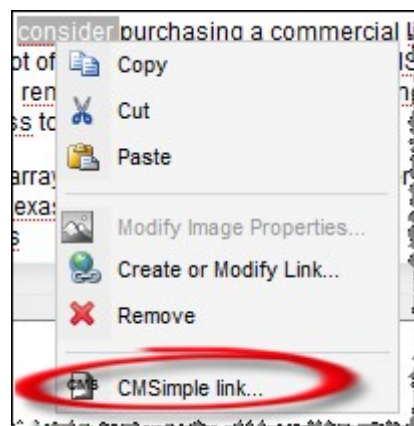
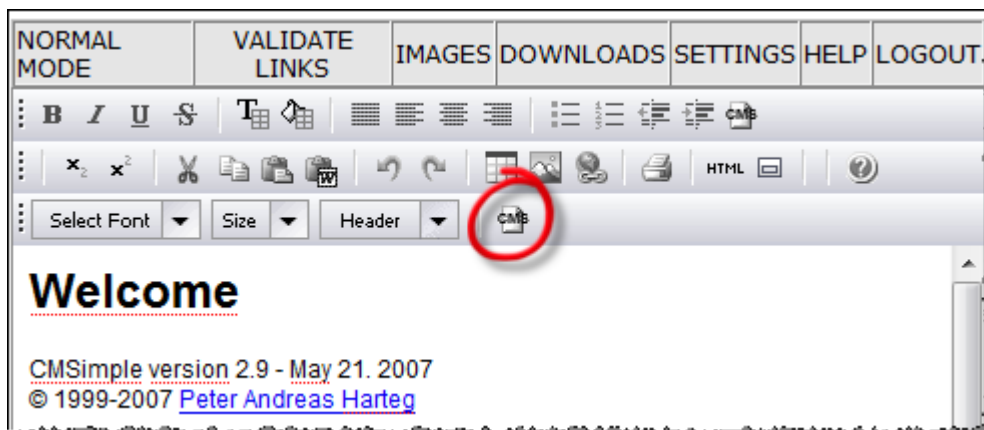
CMSimple page / files drop down for OpenWYSIWYG

As I noticed in the CMSimple forum – The editor section, the OpenWYSIWYG editor was missing a very important feature which is available in the other CMSimple editors... namely the internal **CMSimple page / file linkage**...

With this OpenWYSIWYG modification is it now possible to create hyperlink(s) to :

- internal CMSimple page(s)
- CMSimple downloadable file(s)

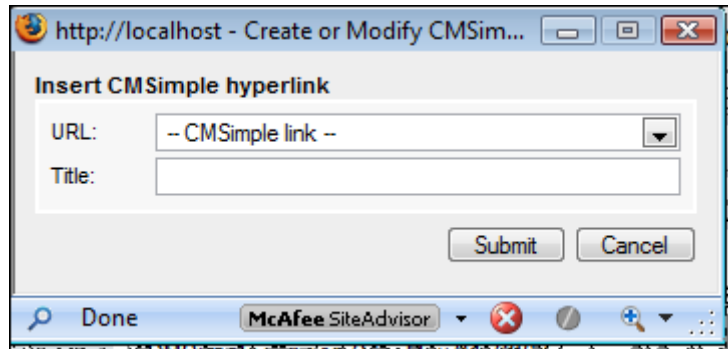
This new feature is represented as an additional **button** in the editor toolbar and as a **new option in the context-menu** (right-click).



It works just like the standard hyperlink feature in OpenWYSIWYG.

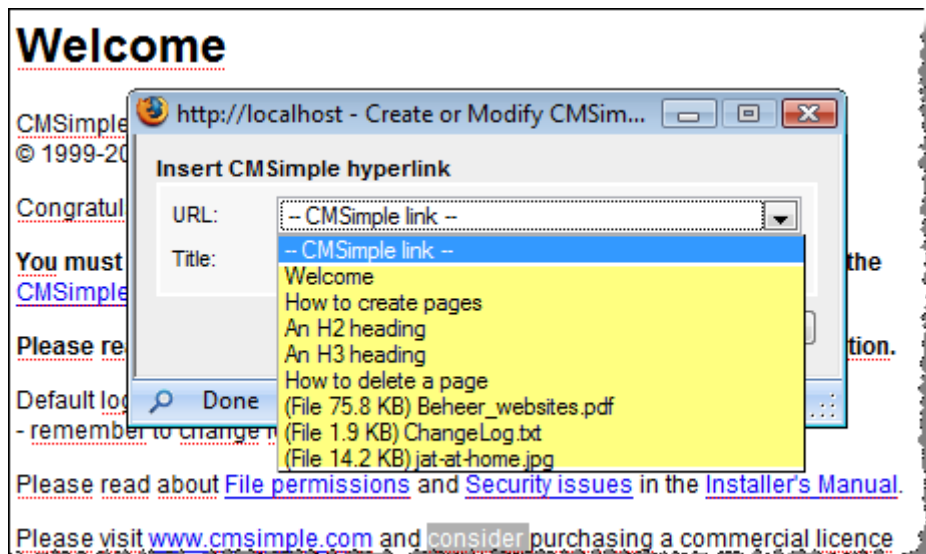
To create a hyperlink to an internal CMSimple page or downloadable file, first one has to select the appropriate text in the page on which a link has to be created.
Next, select the CMSimple page button to create link or right-click and select CMSimple link... from the context-menu.

Clicking the button, opens a new dialog box containing two fields :



The URL field : this is a drop down list containing all available

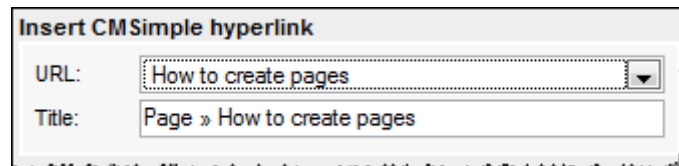
- CMSimple pages.
- downloadable files from the downloads folder in the root of the CMSimple installation.



Now, one can select the appropriate CMSimple page or file to link to.

Automatically, the title field will be filled with a preset text :

- [Page »](#) %page title%

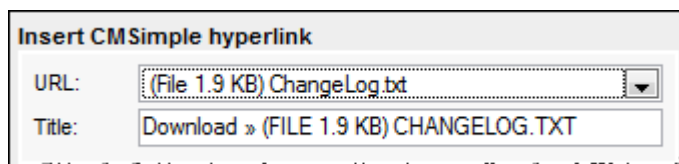


Insert CMSimple hyperlink

URL:

Title:

- [Download »](#) (FILE %file_size%) %file name%

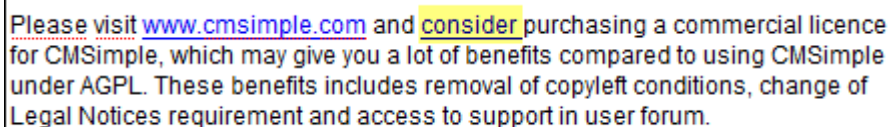


Insert CMSimple hyperlink

URL:

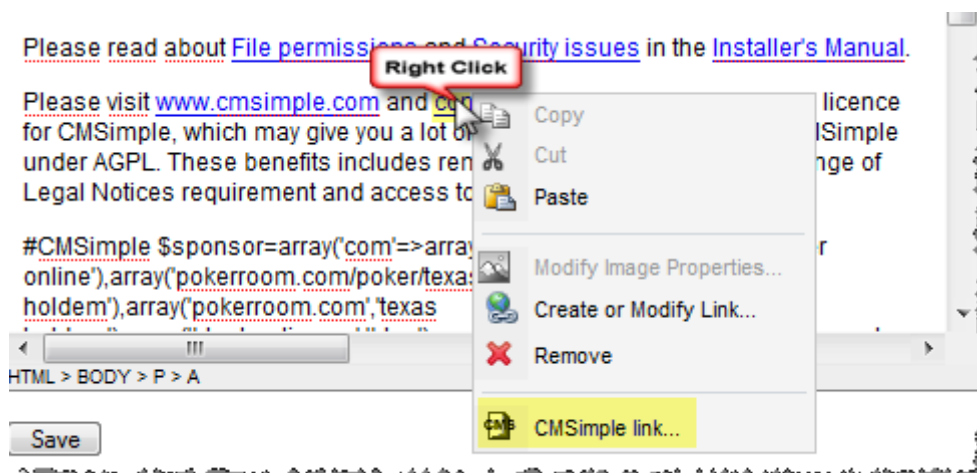
Title:

Press Submit to confirm the creation of the hyperlink.

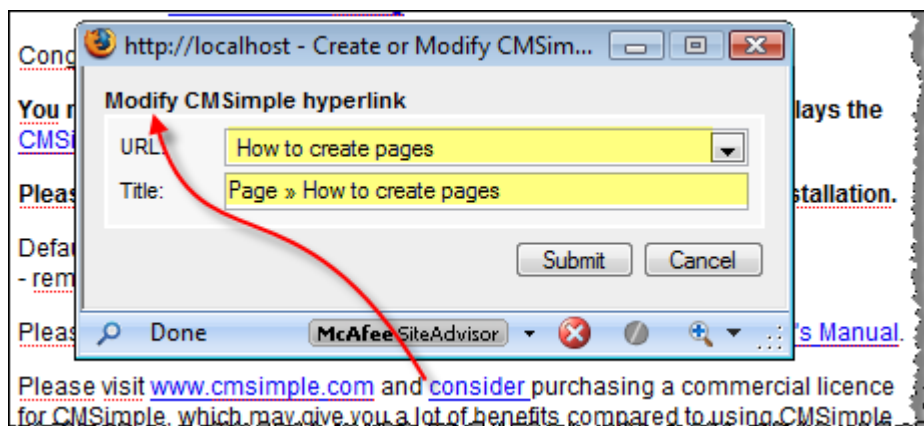


Please visit www.cmsimple.com and **consider** purchasing a commercial licence for CMSimple, which may give you a lot of benefits compared to using CMSimple under AGPL. These benefits includes removal of copyleft conditions, change of Legal Notices requirement and access to support in user forum.

To modify an existing hyperlink to a CMSimple page or file, just select the hyperlink and use the CMSimple link button or use the context-menu.



The **modify CMSimple hyperlink** dialog pops up with the selected hyperlink properties listed in the URL and Title fields.



Change these settings as needed and confirm the changes by pressing the submit button.

Installation

The ZIP file contains two directories:

- cmsimple, containing the **openwysiwyg.php** file
- **openwysiwyg**, containing the editor specific files

1. Copy the **openwysiwyg.php** file into the **cmsimple** folder of your website.
2. Copy the **openwysiwyg** folder in the **root** of your website.
3. In the CMSimple settings, set the **external editor** field value to **openwysiwyg** and save the modifications.

Acknowledgments

This modification can be used 'as is'. Use it at your own risk.

I can't never be held responsible for malfunctioning of the editor or possible data loss.

No 'free support' is given by me on this modification of OpenWYSIWYG.

Credits

- The creators of this editor <http://www.openwebware.com>
- Dr. Tillman Schuster (aka till) from <http://www.nmud.de> for making openWYSIWYG CMSimple compliant
 - includes the following modification(s)
 - <http://www.cmsimple.dk/forum/viewtopic.php?t=6235>