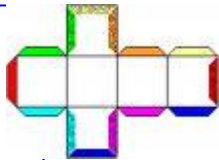
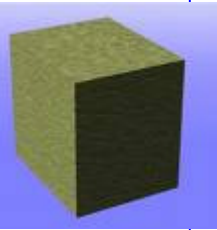


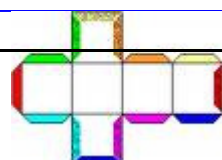
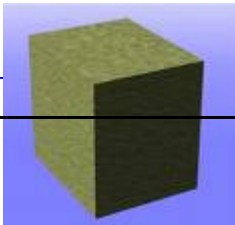
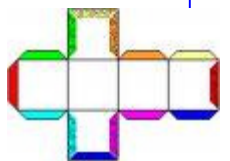
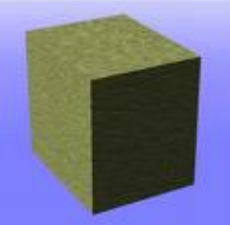
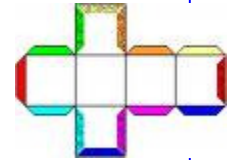
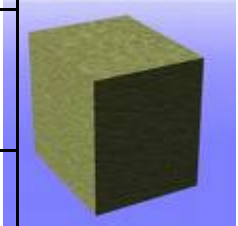
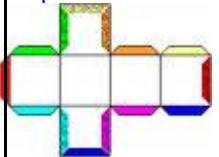
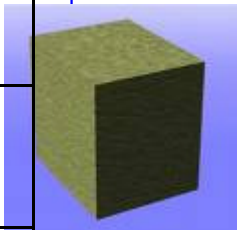
7. Geometrietag— Laufzettel:

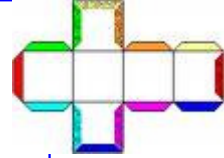
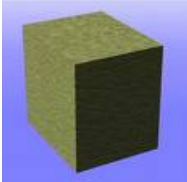
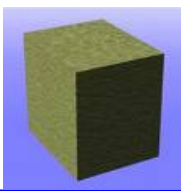
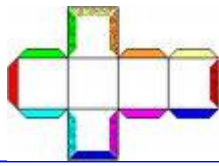


Name:.....



Station 1: Bau einen Würfel	
Station 2: M–Schulübung	
Station 3: Computer	
Station 4: Deutsch	
Station 5: Würfelgeometrie—Einsteiger (2. Laufzettel—wähle 3 Beispiele)	
Station 6: Würfelgeometrie—Fortgeschrittene (2. Laufzettel—wähle 4 Beispiele)	

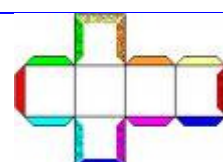
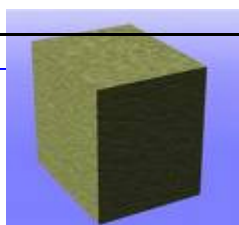
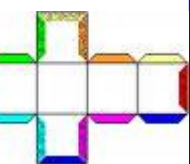
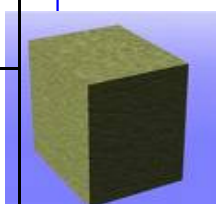
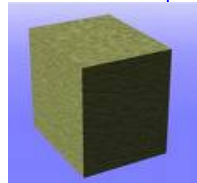
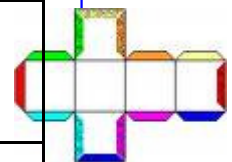
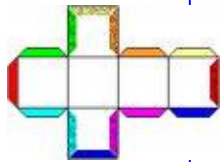
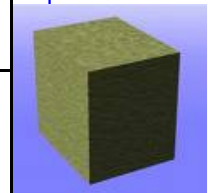


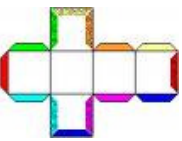
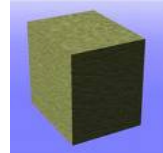
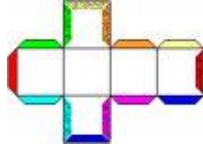
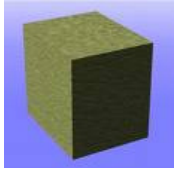


Würfelgeometrie

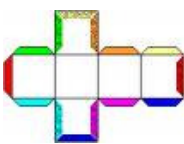
Name:.....

Einsteiger: Muster nachbauen:	
Einsteiger: Muster fortsetzen	
Einsteiger: Würfeltürme errichten	
Einsteiger: Würfelflächen	
Einsteiger: Würfel in der Schachtel	
Fortgeschrittene: Baupläne	
Fortgeschrittene: Würfeltürme errichten	
Fortgeschrittene: Wie sieht das von oben aus?	
Fortgeschrittene: Wie sieht das von vorne aus?	
Fortgeschrittene: Würfel in der Schachtel	



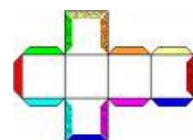
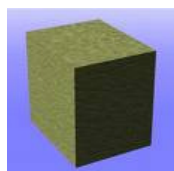
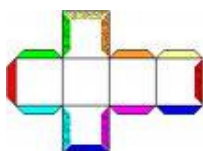
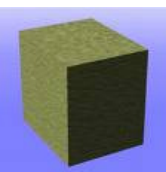
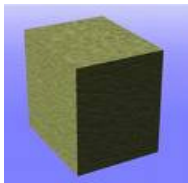


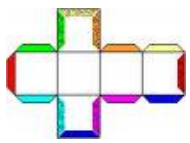
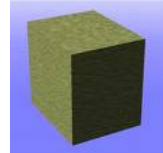
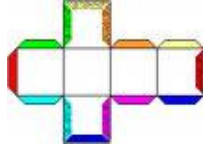
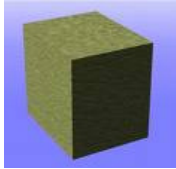
Station 1



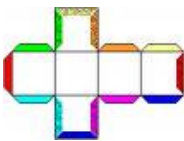
Baue einen Würfel

- * Nimm die Kopiervorlage, bemale sie und klebe sie zu einem Würfel zusammen!
- * Schneide den Würfel mit einer spitzen Schere wieder auseinander.
Achtung! Er darf nicht auseinander fallen.
- * Hefte dein entstandenes „Netz“ mit einem Magneten an die Tafel!
- * Was beobachtest du im Vergleich mit den Netzen anderer Schülern?





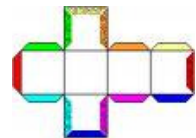
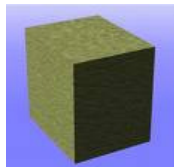
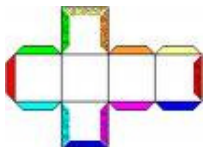
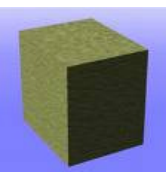
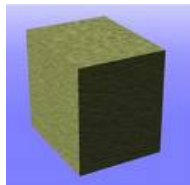
Station 2

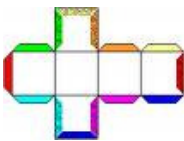
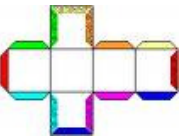
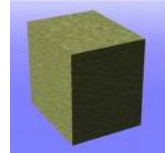
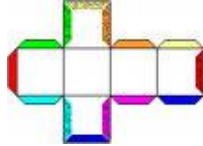
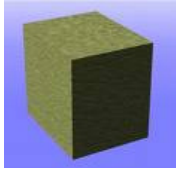


M—Schulübung

* Nimm dein SÜ—Heft, zeichne den Würfel vom Blatt fertig und schreibe die Eigenschaften des Würfels dazu! (Nimm deinen Clix - Würfel!)
(Fachausdrücke: Ecken, Kanten, Flächen).

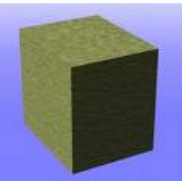
* Klebe zum Schluss das Netz deines Papierwürfels ins Heft!





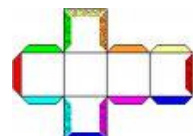
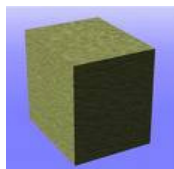
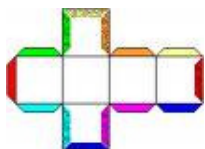
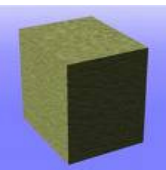
Station 3

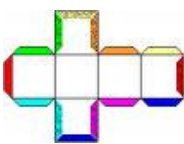
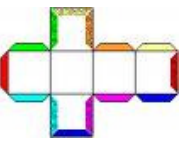
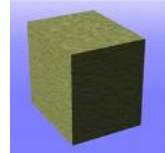
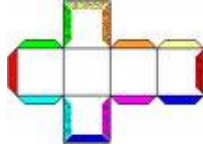
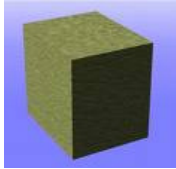
Computer



* Löse die Geometrieaufgaben im „Matheland“.

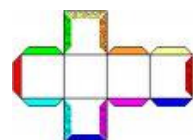
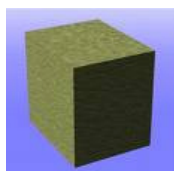
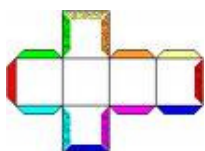
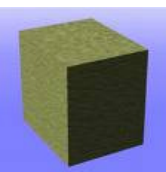
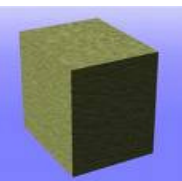
* Im Lagerhaus wartet die Aufgabe an der Verpackungsmaschine:
(Dort kannst du deine Kenntnisse der Würfelnetze anwenden.)

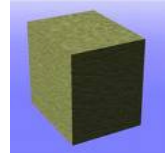
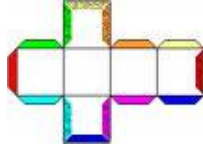
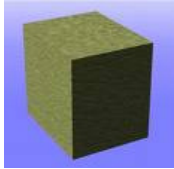




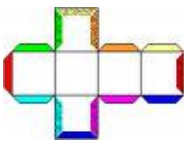
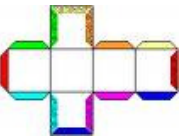
Station 4

Deutsch





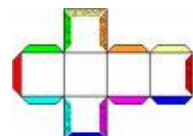
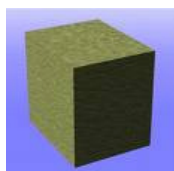
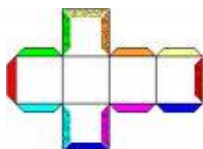
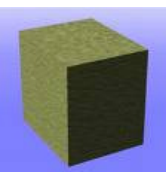
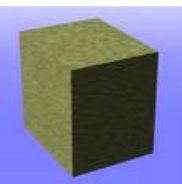
Station 5

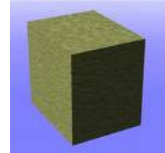
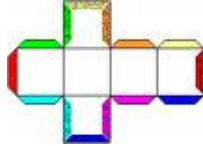
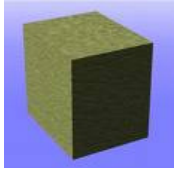


Würfelgeometrie—Einsteiger

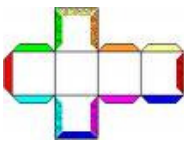
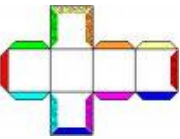
* Wähle aus den Karten 3 Beispiele aus

DU DARFST NATÜRLICH AUCH NOCH MEHR BEISPIELE LÖSEN!!!!





Station 6

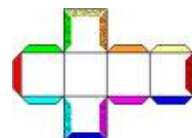
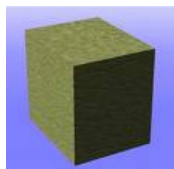
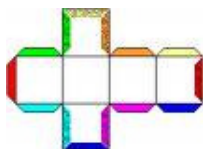
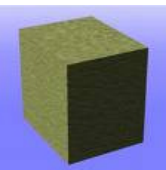
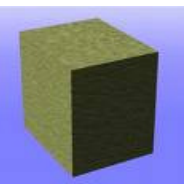


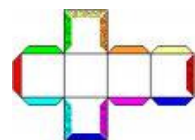
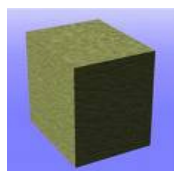
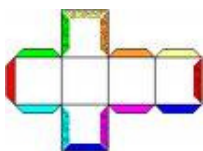
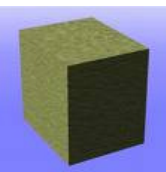
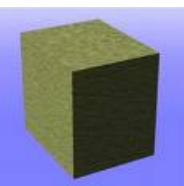
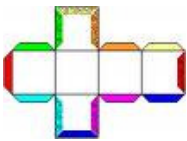
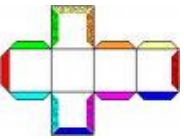
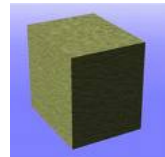
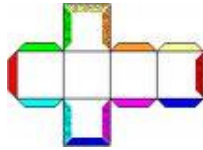
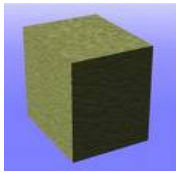
Würfelgeometrie—Fortgeschrittene

WÄHLE 4 BEIPIELE DIESER STATION AUS:

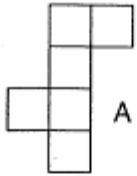
- * Wähle aus den Karten „Wie sieht das von oben aus“
- „Wie sieht das von vorne aus“
- „ Würfel in der Schachtel“
- „ Würfeltürme “.....aus und schreibe die Nummern auf

HAST DU LUST AUF MEHRERE BEISPIELE??? NA, DANN LOS!!!!!!



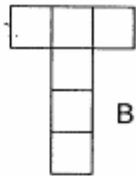


Hier siehst du 17 Netze. Findest du alle möglichen Würfelnetze?
 Wie viele gibt es?



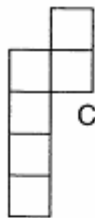
A

ja nein



B

ja nein



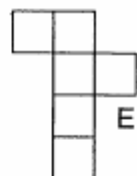
C

ja nein



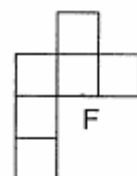
D

ja nein



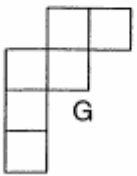
E

ja nein



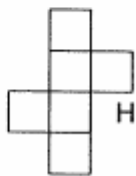
F

ja nein



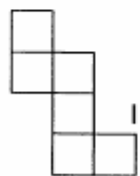
G

ja nein



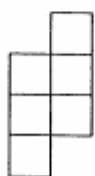
H

ja nein



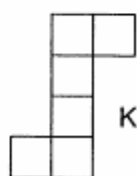
I

ja nein



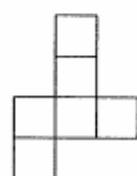
J

ja nein



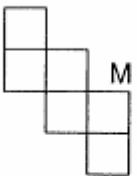
K

ja nein



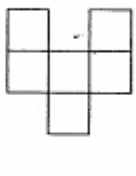
L

ja nein



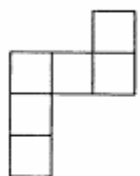
M

ja nein



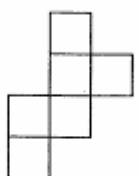
N

ja nein



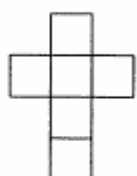
O

ja nein



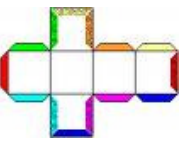
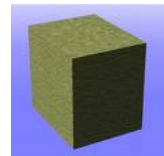
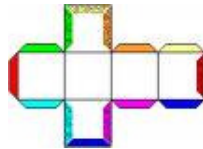
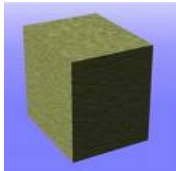
P

ja nein

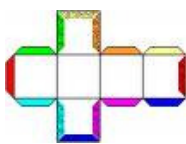


Q

ja nein



Hausübung



Würfelnetze finden

- * Nimm dir 6 Clix-Quadrate und das Arbeitsblatt!
- * Baue einen Würfel und zerlege ihn wieder, ohne dass die Teile auseinander fallen.
- * Vergleiche mit den Netzen deines Arbeitsblattes!
- * Wie viele Netze, aus denen man einen Würfel stecken kann, gibt es?

